

ACCESSORIES

Deck Gear • **Control Gear**



Anchoring Solutions

Windlasses

Capstans

Accessories

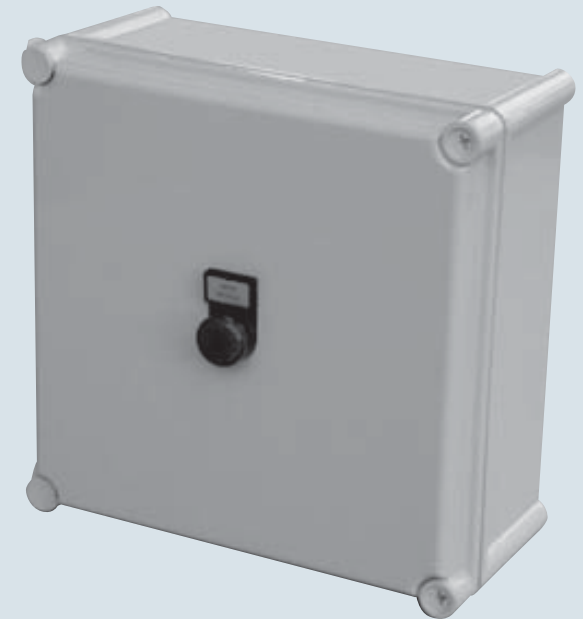
Direct-on-line (DOL) Starters for AC Motors

Variations of DOL starters:

- For single speed motors, running in one direction (stern capstans)
- For two speed motors, running in one direction (stern capstans)
- For single speed motors, running in both directions (windlasses)
- For two speed motors, running in both directions (windlasses)

Features:

- Simple and reliable design
- Quality components
- Tailor made to complement windlasses & capstans
- Environmentally protected to IP56
- Toughened PVC enclosure
- Bulkhead mounting



ACCESSORIES

Deck Gear • **Control Gear**



Anchoring Solutions

Windlasses

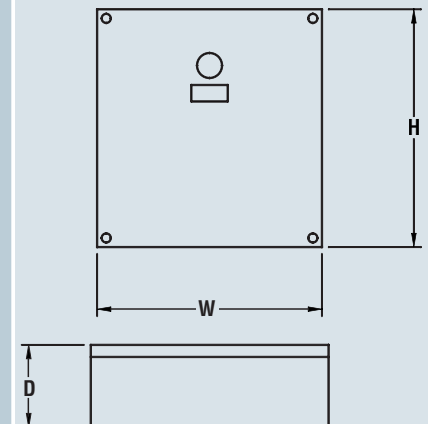
Capstans

Accessories

Input/Output Terminals

	SGL SPD SGL DIR	SGL SPD DUAL DIR	DUAL SPD SGL DIR	DUAL SPD DUAL DIR
W	280mm 11 1/16"	280mm 11 1/16"	380mm 15"	380mm 15"
H	280mm 11 1/16"	280mm 11 1/16"	280mm 11 1/16"	280mm 11 1/16"
D	130mm 5 1/8"	130mm 5 1/8"	130mm 5 1/8"	130mm 5 1/8"
Weight	4 kg 9 lb	5 kg 11 lb	6 kg 13 lb	8 kg 18 lb

		SGL SPD SGL DIR	SGL SPD DUAL DIR	DUAL SPD SGL DIR	DUAL SPD DUAL DIR
1	L1	•	•	•	•
2	L2	•	•	•	•
3	L3 Earth	•	•	•	•
4	U1	•	•	•	•
5	V1	•	•	•	•
6	W1	•	•	•	•
7	U2			•	•
8	V2			•	•
9	W2			•	•
10	Brake			•	•
11	Brake			•	•
13	Common	•	•	•	•
15	Raise	•	•	•	•
16	Lower		•		•
17	High Speed			•	•
18	Remote Alarm	•	•	•	•
19	Remote Alarm	•	•	•	•
20	Thermistors	•	•	•	•
21	Thermistors	•	•	•	•



ACCESSORIES

Deck Gear • **Control Gear**



Variable Frequency Motor Controllers

Variable frequency drives have many advantages over more simple, direct on line solutions:

- Eliminate high current requirements during startup and speed change on two speed, pole changing motors
- Achieve multiple speeds with a standard, single speed motor, which is simpler, smaller and less expensive than an equivalent two-speed, pole changing motor
- Superior speed control capability, including pre-set speeds
- Accurate overload protection by monitoring both the motor temperature and current
- Soft starting and speed change to avoid mechanical shocks to windlass and chain
- LCD display with a wide range of messages to help with programming and troubleshooting

Anchoring Solutions

Windlasses

Capstans

Accessories



Enclosure - Powder coated cabinet, IP56

The cabinet houses 2 VFD units (for pair of windlasses), pre-wired with the necessary isolators, fuses, relays and terminal strips.

ACCESSORIES

Deck Gear • **Control Gear**



Anchoring Solutions

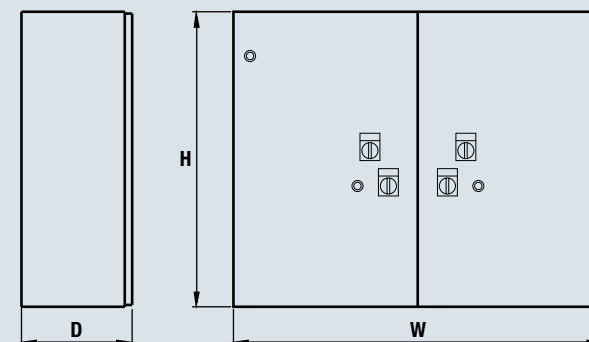
Windlasses

Capstans

Accessories

VFMC Cabinet

MODEL	MD 7.5	MD 11
W	1000 mm	1000 mm
H	800 mm	800 mm
D	300 mm	300 mm
Weight	80 kg	113 kg
Max Motor Size	7.5 kW	11 kW
IP Rating	56	56
Brake Resistor	175U1847	175U1848



ACCESSORIES

Deck Gear • **Control Gear**



Anchoring Solutions

Windlasses

Capstans

Accessories

Braking Resistor

Power	10% 7kW	10% 14kW
Resistance	65 ohm	40 ohm
W	220 mm	220 mm
H	80 mm	80 mm
D	30 mm	30 mm
Mounting Screw	6mm	6mm
Weight	0.5 kg	0.5 kg

A Braking Resistor (an integral part of VFMC) is used to dissipate the electrical energy, generated when lowering the windlass. It is not installed in the same cabinet because it does not need to be in an accessible area. Once wired, it should provide years of trouble free service, without need for any maintenance or attention. Since it has protection rating IP 20, it should be installed in a suitably protected area. The Braking Resistor is not needed for controlling stern capstans.



ACCESSORIES

Deck Gear • **Control Gear**



Anchoring Solutions

Windlasses

Capstans

Accessories

Foot switch

Options

- Switch with chromed bronze bezel, no cover
- Switch with white plastic bezel and cover
- Switch with black plastic bezel and cover
- Switch with stainless steel bezel and cover

Features

- UV stabilized diaphragm
- Rated to 200A peak current and 120A continuous current
- Nickel plated copper contacts ensure good conductivity and high corrosion resistance
- Heavy duty
- Easy to install

Pendant controllers

The pendant controller is often the preferred choice for operating the windlass. Its rugged design makes it ideal for the critical task of lowering and raising the anchor, where safety is paramount.

The hand held unit is plugged in a water-proof socket, mounted in a convenient location. This socket is wired to the control circuitry of the windlass. When not used, the unit can be unplugged and stored away.

Standard features:

- Simple, two button, up and down operation
- Water-proof plug and socket connection
- Momentary (non-latching) buttons for safety, no emergency stop button required (B)

Optional features:

- Double depression buttons for intuitive two speed control
- Additional buttons to control other equipment (e.g. hydraulic pump or chain wash system)
- 6m and 9m cable lengths

